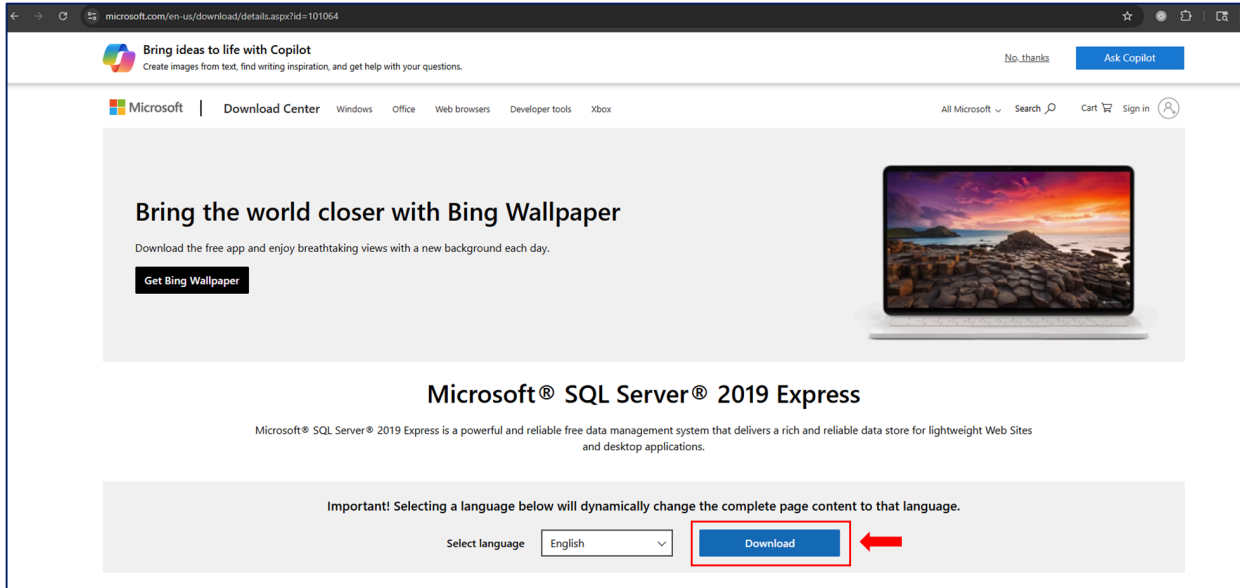


SQL Server 2019 Installation Guide

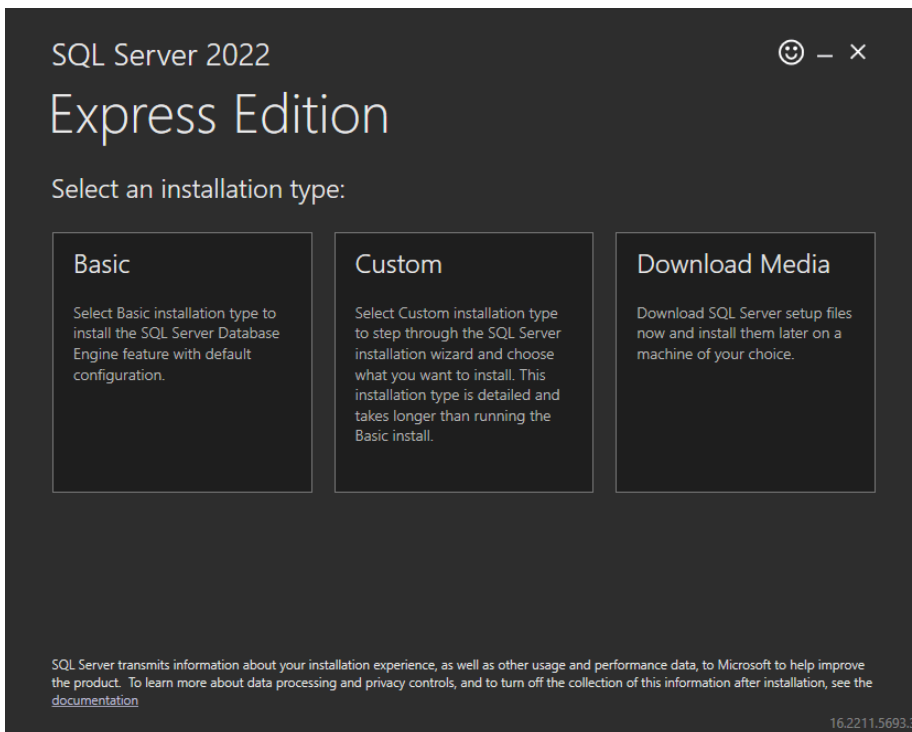
Step 1

Download & Run setup for Microsoft SQL Server 2019 Express

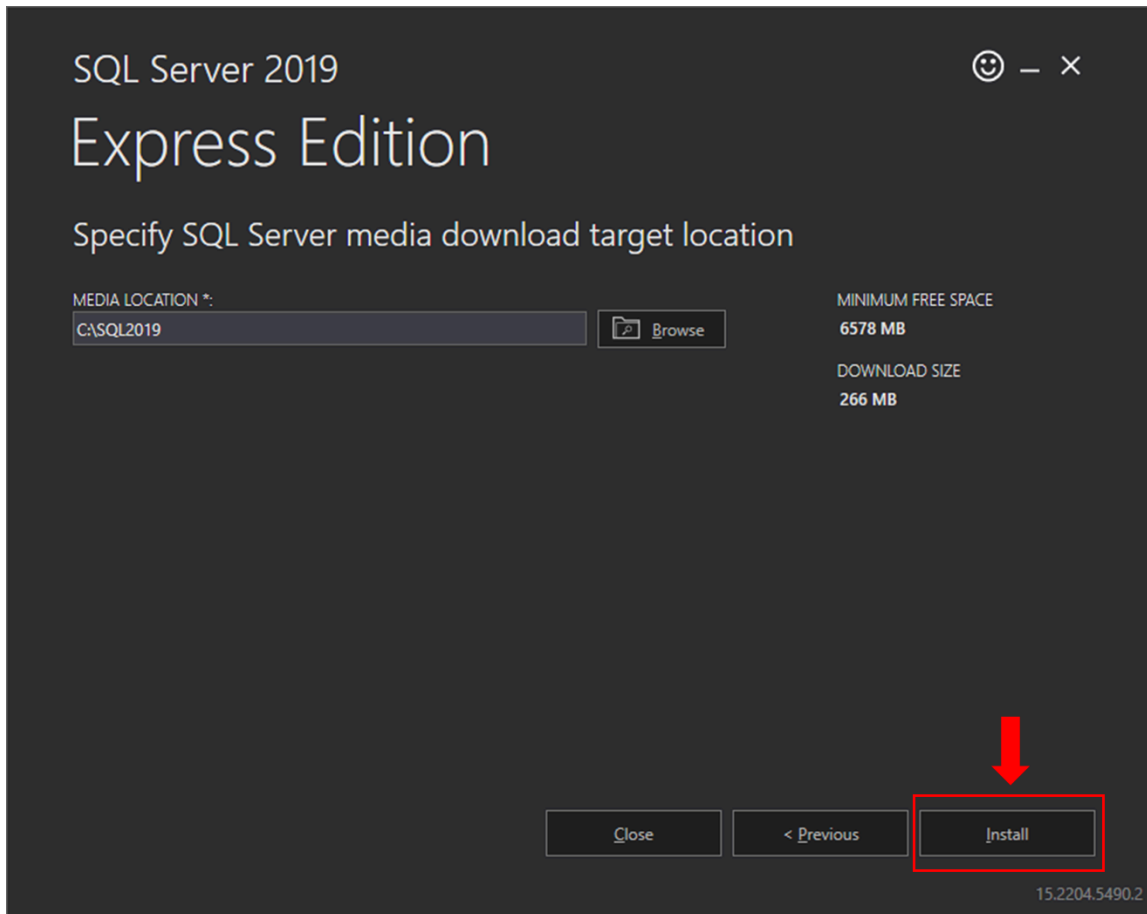
- Link to Download - <https://www.microsoft.com/en-us/download/details.aspx?id=101064>



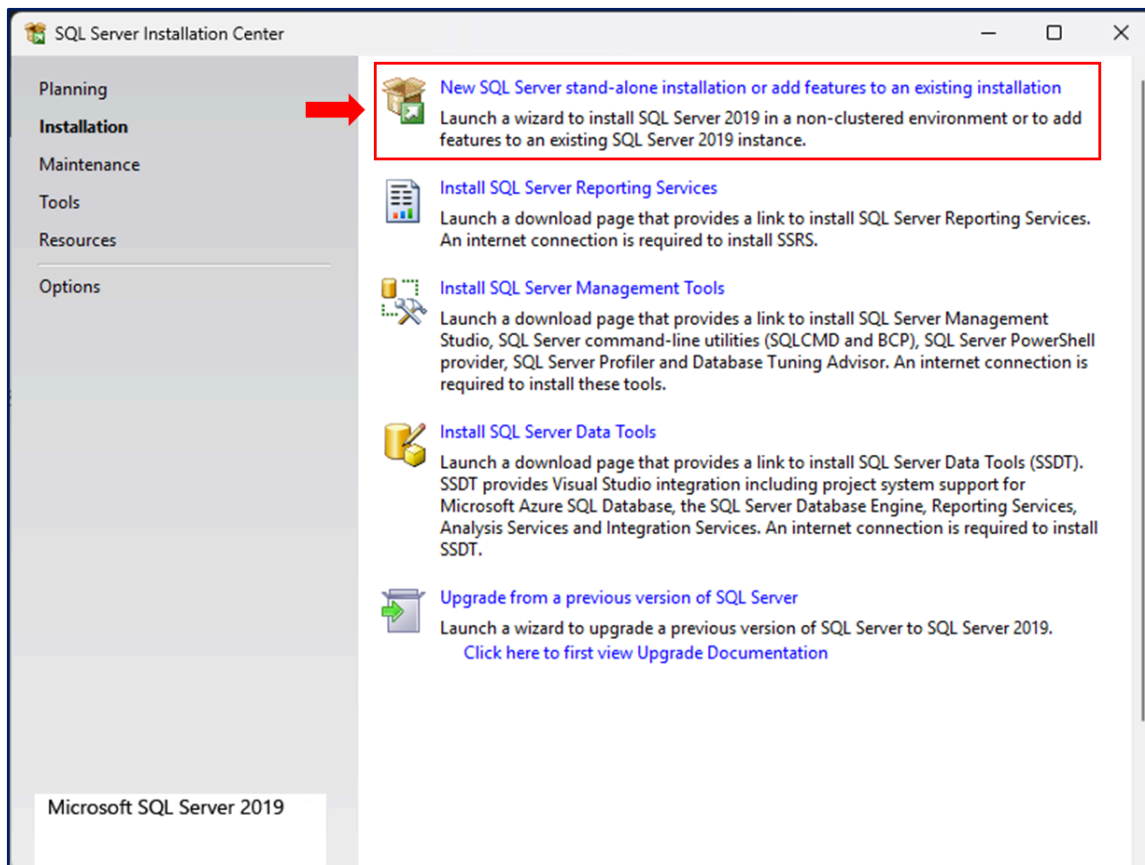
Select Custom Installation Type



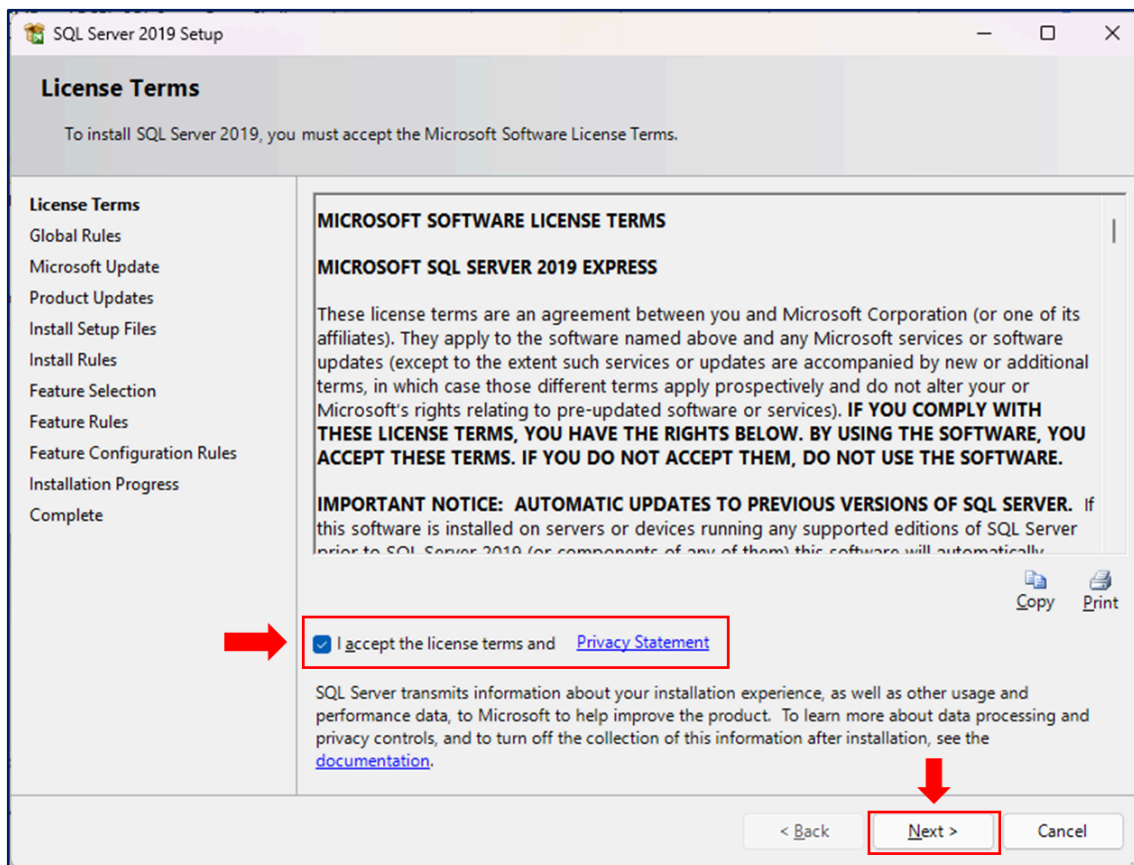
No need to change the media location > click Install



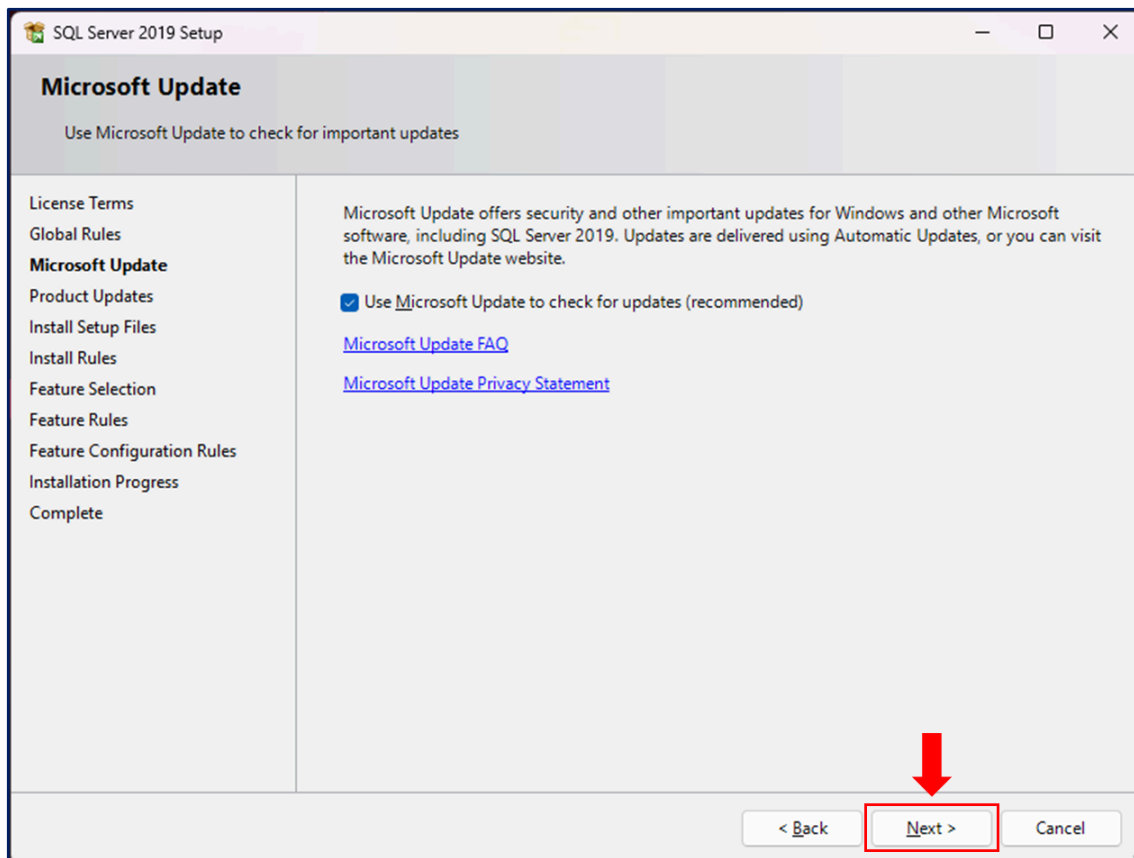
Select First Option - New SQL Server stand-alone installation



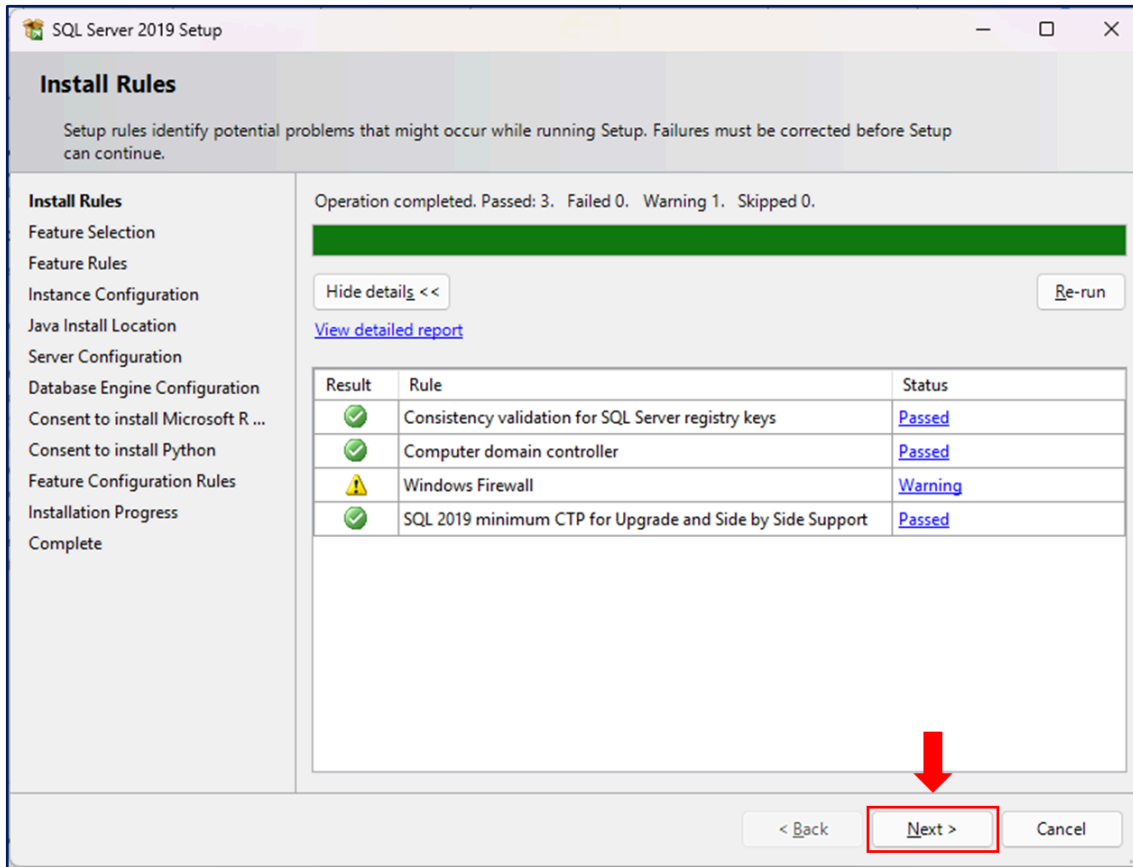
Accept License Terms and Click Next



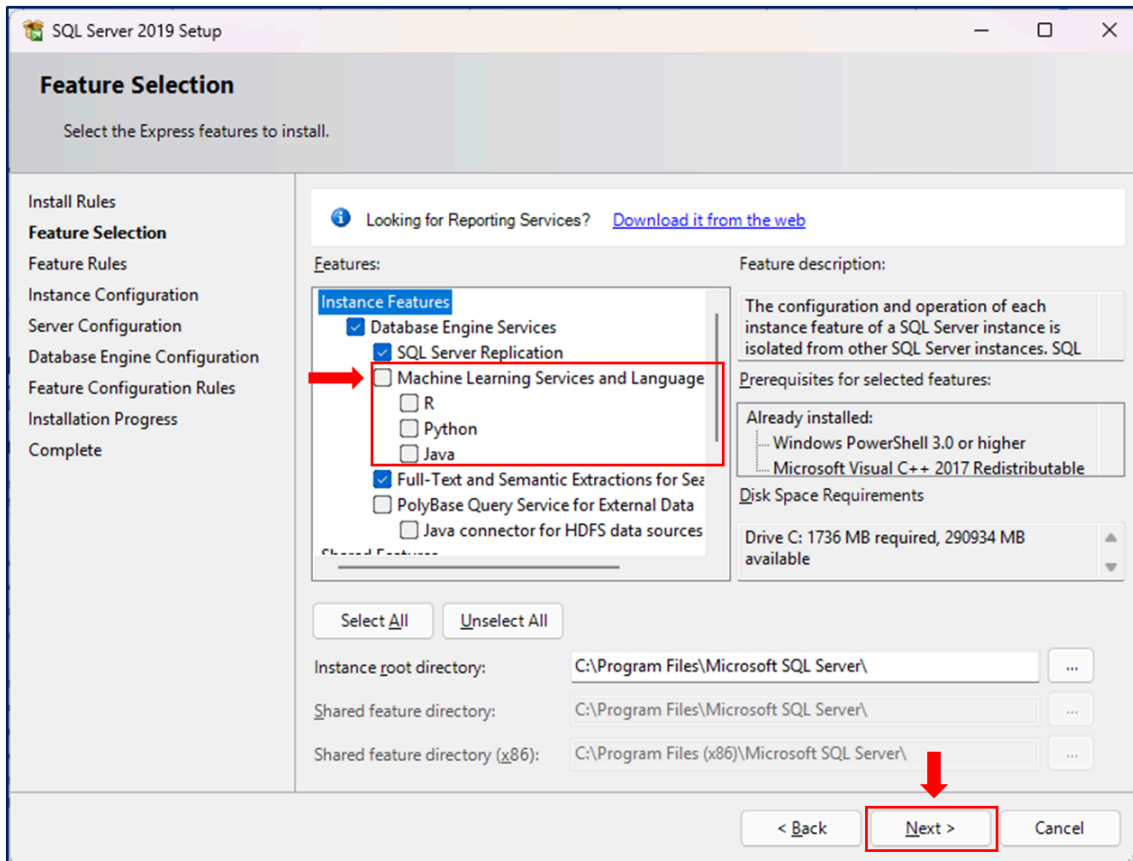
Check mark box to check for updates > click next



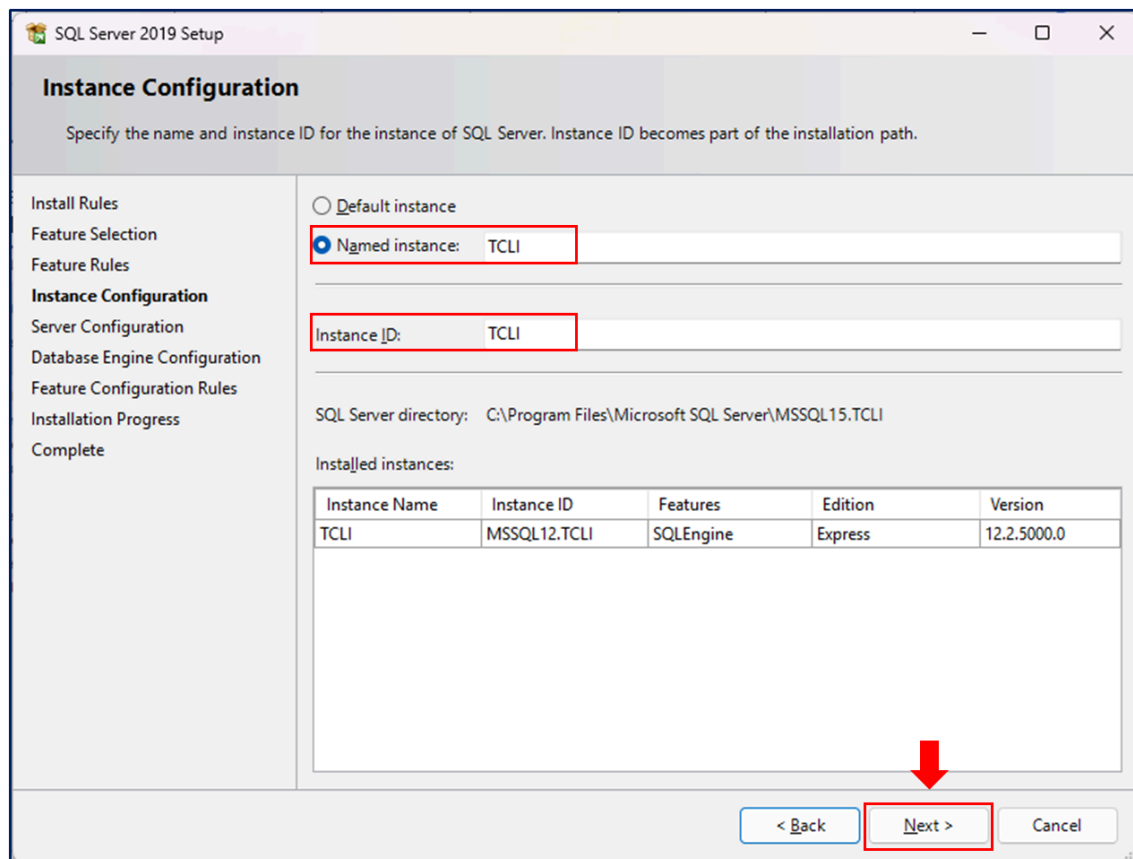
Click Next



Uncheck Machine Learning Services and Languages (this keeps the installation from being too long)
Click Next to continue



Change the Named Instance & Instance ID to **TCLI**



SQL Server 2019 Setup

Instance Configuration

Specify the name and instance ID for the instance of SQL Server. Instance ID becomes part of the installation path.

Install Rules
Feature Selection
Feature Rules
Instance Configuration
Server Configuration
Database Engine Configuration
Feature Configuration Rules
Installation Progress
Complete

☐ Default instance
☒ Named instance: TCLI

Instance ID: TCLI

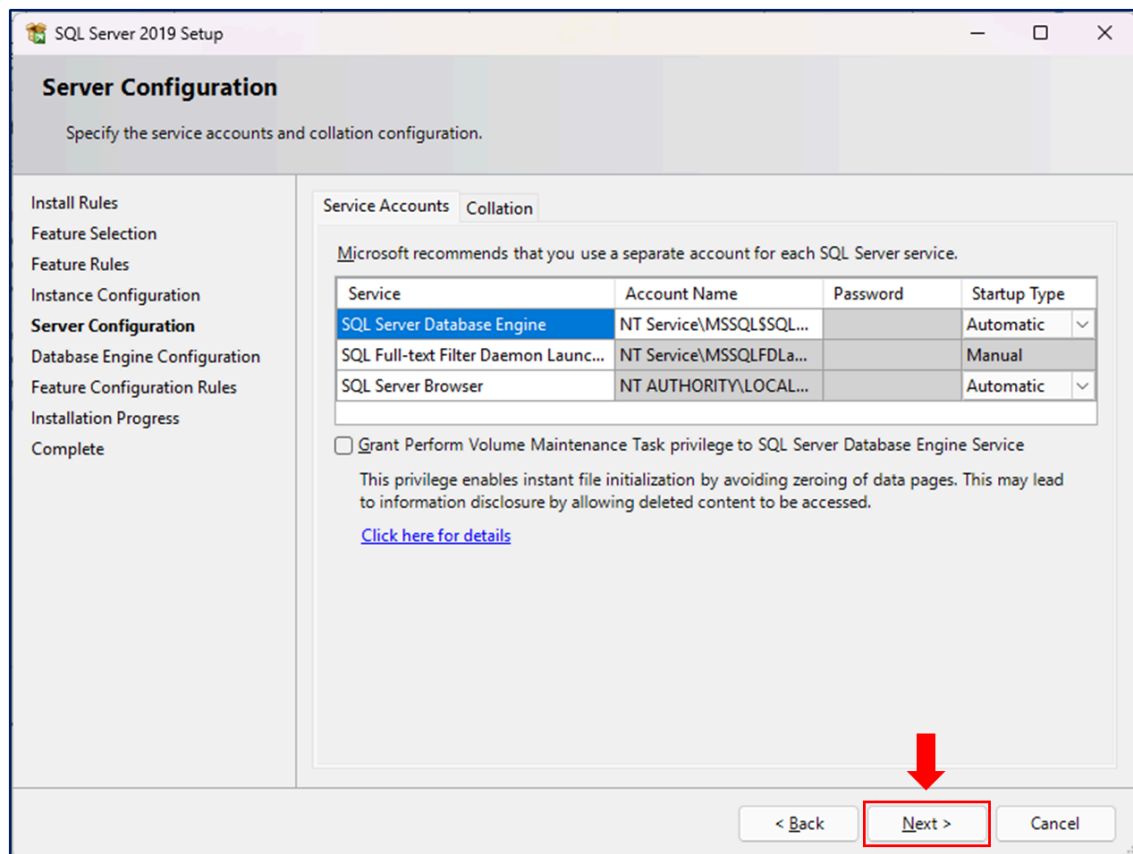
SQL Server directory: C:\Program Files\Microsoft SQL Server\MSSQL15.TCLI

Installed instances:

Instance Name	Instance ID	Features	Edition	Version
TCLI	MSSQL12.TCLI	SQLEngine	Express	12.2.5000.0

< Back **Next >** Cancel

Click Next to continue



SQL Server 2019 Setup

Server Configuration

Specify the service accounts and collation configuration.

Service Accounts Collation

Microsoft recommends that you use a separate account for each SQL Server service.

Service	Account Name	Password	Startup Type
SQL Server Database Engine	NT Service\MSSQL\$SQL...		Automatic
SQL Full-text Filter Daemon Launc...	NT Service\MSSQLFDLa...		Manual
SQL Server Browser	NT AUTHORITY\LOCAL...		Automatic

☐ Grant Perform Volume Maintenance Task privilege to SQL Server Database Engine Service

This privilege enables instant file initialization by avoiding zeroing of data pages. This may lead to information disclosure by allowing deleted content to be accessed.

[Click here for details](#)

< Back **Next >** Cancel

Select Mixed Mode

Enter password - tcli4333%

Select Next to continue

SQL Server 2019 Setup

Database Engine Configuration

Specify Database Engine authentication security mode, administrators, data directories, TempDB, Max degree of parallelism, Memory limits, and Filestream settings.

Install Rules
Feature Selection
Feature Rules
Instance Configuration
Server Configuration
Database Engine Configuration
Feature Configuration Rules
Installation Progress
Complete

Server Configuration | Data Directories | TempDB | Memory | User Instances | FILESTREAM

Specify the authentication mode and administrators for the Database Engine.

Authentication Mode

☐ Windows authentication mode

☒ **Mixed Mode (SQL Server authentication and Windows authentication)**

Specify the password for the SQL Server system administrator (sa) account.

Enter password:

Confirm password:

Specify SQL Server administrators

CLI-74\Hirut (Hirut)

SQL Server administrators have unrestricted access to the Database Engine.

Add Current User | Add... | Remove

< Back | **Next >** | Cancel

Next step will take several minutes ... be patient!

Close setup window if all features have a green check mark

SQL Server 2019 Setup

Complete

Your SQL Server 2019 installation completed successfully with product updates.

Install Rules
Feature Selection
Feature Rules
Instance Configuration
Server Configuration
Database Engine Configuration
Feature Configuration Rules
Installation Progress
Complete

Information about the Setup operation or possible next steps:

Feature	Status
Full-Text and Semantic Extractions for Search	Succeeded
Database Engine Services	Succeeded
SQL Server Replication	Succeeded
SQL Browser	Succeeded
SQL Writer	Succeeded
Client Tools Backwards Compatibility	Succeeded

Details:

Install successful.

Summary log file has been saved to the following location:

C:\Program Files\Microsoft SQL Server\150\Setup Bootstrap\Log\20250924_132434\Summary_CLI-74_20250924_132434.txt

Close

Step 3

- Download and Run as Administrator the setup wizard for EL3 Full Install - should already be in the downloads folder in File Explorer
- Launch EL and follow the on screen instructions for the system to automatically create the database
- Login using TCLI Credentials and email address.